

## **THIS ISN'T COMPLICATED! OUR TECHNICAL GUYS JUST GET A LITTLE WORDY.**

You have purchased (or have found another way to acquire) the amazing #SR-a shower rod! OK, maybe not amazing in the technical sense, but the room it will create in your tub will allow you to wash your hair or pick up soap in your shower without having your elbows (or whatever) rub against the shower curtain. Those with claustrophobia or with a little paunch around the middle (like our president) will enjoy being able to turn around in the shower without having that icky latex feeling against your skin. If you're a macho guy with a hairy chest who doesn't need directions you should be able to do this during the two intermissions of a hockey game. However, as simple as it is, go ahead and read the instructions first.

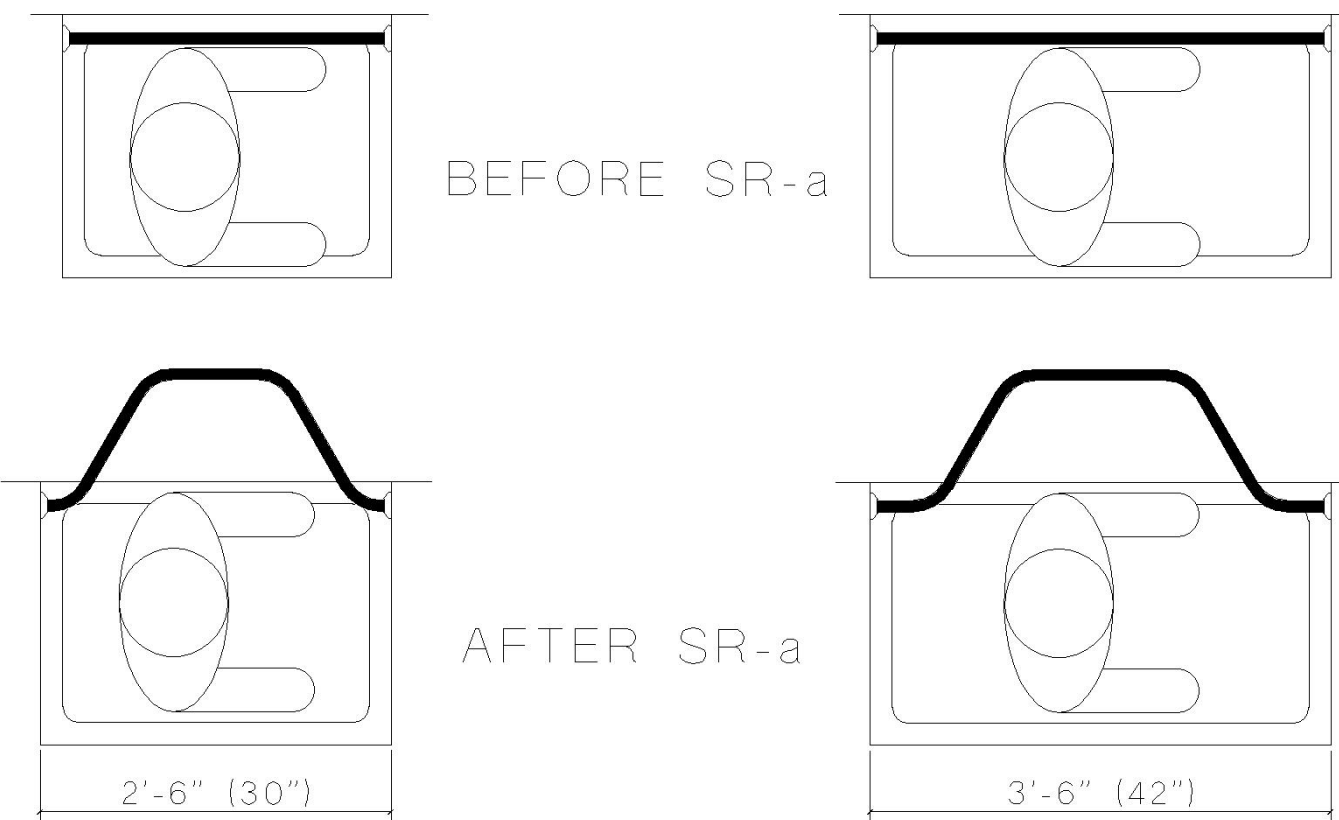
1. **Tools scare me. What do I need?** Even girls should be able to come up with the following:
  - If your shower is less than 42" wide a **HACKSAW**, or maybe a laser, or plasma cutter, will be handy. We suggest the hacksaw unless you work in a machine shop.
  - A flat blade **SCREWDRIVER**.
  - A **MEASURING DEVICE** will be really handy. Like, you know, a tape measure.
  - Maybe a **SMALL DRILL**. If you're like us, you may choose to make a nail hole or starter dent and just press really hard as you put the screws in. Unless your shower is armor-plated you won't need anything exotic.
2. **What the heck is supposed to be in the box?** (Fig. 2)
  - 2.a – (2) identical bent pieces of 1" outside diameter tube (part #BPT-1).
  - 2.b – (1 pair) of wall flanges with screws (part #WF-1).
  - 2.c – (1) hangy-downy-thingy assembly (part #HDT-1) including a ring, a support rod, a ceiling plate, and screws.
  - 2.d – (1) short straight interior tube that fits inside the big bent pieces (part #SSITTFIBBP-1).
3. **Get the area ready – you don't want a lot of stuff getting in your way.**
  - Make sure your shower curtain is long enough to stay inside the tub when the top of it is moved outside the tub about 12". If it won't, you may need to get a longer curtain or mount the new rod a little lower than your current one. (Fig. 3.)
  - Remove the existing wall flanges. If you weren't paying attention, your existing shower curtain and rod just fell on your head. It's entirely possible that your new wall flanges might be exactly the same as the old ones, so you may not need to make new holes.
  - Take the stuff you don't need and put in somewhere your spouse doesn't object to.
4. **Assemble the new curtain rod and measure the space it needs to fit in.**
  - Slide the short interior tube into one of the bent pieces. Slide the other bent piece over the interior piece. The two bent pieces should fit together in a hairline joint. (Fig. 4.1)
  - Note that the straight ends of each bent tube are not equal in length. This is to give you some degree of flexibility in case you have an obstruction (like a medicine cabinet, light fixture, or fan). The short piece will fit into any end of the bent pieces, so fool around with it until you get it the way you like. Since the hangy-downy-thingy will prevent the curtain from being opened past it, you may choose to offset the tube assembly so that the curtain will open as far as possible (Fig. 4.2). The less you need to trim, the less flexibility you will have in offsetting the bends. You will get the most space if you put the long ends of the tubes together.
  - Your new curtain rod should already fit into a 42" space. If your space is less, you'll need to cut off part of it at one or both ends next to the wall, being sure to leave enough straight section to accommodate the wall flanges. If your shower is REALLY small you may also need to cut off part of the center section. The easiest way to see how long your new curtain rod needs to be is to compare it to your old one. Maybe you didn't need that pesky old measuring device anyway!
  - Mark where you want to cut the tube.

5. **Stop working.** (Fig. 5)
  - The second period of the hockey game has started. Have a cold beverage, put up your feet, and watch the game. If you don't have a TV handy, do something else brainless. If your spouse objects, tell her/him that it's in Step 5 of the directions.
  - While you're relaxing, think about your measurements and do them over again in your head or for real during a commercial. You're going to do some cutting pretty soon, and you don't want to change your mind AFTER you've cut the tube.
6. **Cut the tube and verify the fit.**
  - The second period has ended. As a personal favor to us, please check your dimensions again. And again. If you mess up, we've got more of these that you can buy, but we'd prefer that you get it right the first time. You may want to cut it long and then trim it after you verify the fit.
  - Cut the tube(s), reassemble them with the interior tube, and slide the wall flanges and the ring part of the hangy-downy-thingy onto the tube assembly. Hold the tube assembly up to the space where it will be going. Hopefully it fits in the space and doesn't fall out when you push the flanges against the walls at either side.
  - If it's too big, trim as necessary. If it falls out of the wall flanges, you cut it too short. You can order a new one and give or sell the one you have to someone whose shower is smaller than yours or, if you don't really care all that much, push the tubes apart at the center and wrap it with duct tape. (Fig. 6)
7. **About the hangy-downy-thingy.**
  - You've probably already noticed that the offset part of the tube assembly hangs down when it is supported only at the ends. This is what we like to call Mr. Gravity.
  - When you're satisfied with the fit of the tube assembly, determine where you want the hangy-downy-thingy to go. We suggest that it be placed about halfway along one of the angled transitions. (Fig. 7.1) This will give the tube assembly adequate support while allowing a reasonable shower curtain opening when you're getting in or out, so you'll want to consider which direction gives you the best access.
  - Directly above the ring, mark the location of the ceiling plate screw holes and center hole. The support rod will connect the ceiling plate and the ring part. Although it's possible to cut the support rod precisely enough to avoid creating a hole in the ceiling, we suggest you cut it a little long and make a hole in the ceiling for the rod to fit into. (Fig. 7.2)
  - Mount the ceiling plate to the ceiling. Secure the ring to the support rod, insert the rod into the plate and adjust to the desired height (normally at the same level as the end plates). Cut the rod if necessary to avoid any obstructions above the ceiling.
8. **Mount the assembled unit.**
  - Slide the tube assembly through the ring and slide the wall flanges on the tube assembly before you secure the wall flanges to the wall.
  - Secure the wall flanges to the wall at each side.
  - Put on the curtain, remembering that one end will need to stay beyond the hangy-downy-thingy.
  - Step inside the shower and marvel at how much room you have!

*Disclaimer – If you like to work out, don't use the shower curtain rod for chin-ups.*

# Model #SR-a Offset Shower Rod Assembly

Fits Showers from 30"-42"



Your friends will be jealous. We have anticipated that and have provided little referral labels below that you can tear off and give to them so they can order a few for themselves or to give as gifts. We don't offer you a reward for this, but you may be pleased to know that 5% of all of our profits go to Covenant Hills Camp in Otisville, Michigan, and 5% go to the Lapeer (Michigan) Free Methodist Church.  
**THANKS FOR BEING OUR CUSTOMER!**

Model #SR-A Shower Rod  
C.i.i. RV Specialties  
545-A North Saginaw Street  
Lapeer, MI 48446  
810-667-3100  
www.ciirvs.com

Model #SR-A Shower Rod  
C.i.i. RV Specialties  
545-A North Saginaw Street  
Lapeer, MI 48446  
810-667-3100  
www.ciirvs.com

Model #SR-A Shower Rod  
C.i.i. RV Specialties  
545-A North Saginaw Street  
Lapeer, MI 48446  
810-667-3100  
www.ciirvs.com

Model #SR-A Shower Rod  
C.i.i. RV Specialties  
545-A North Saginaw Street  
Lapeer, MI 48446  
810-667-3100  
www.ciirvs.com

Model #SR-A Shower Rod  
C.i.i. RV Specialties  
545-A North Saginaw Street  
Lapeer, MI 48446  
810-667-3100  
www.ciirvs.com

Model #SR-A Shower Rod  
C.i.i. RV Specialties  
545-A North Saginaw Street  
Lapeer, MI 48446  
810-667-3100  
www.ciirvs.com

